

# KENWOOD

Listen to the Future

*Alfa Radio*

85-766 Bydgoszcz; ul. Fordońska 246  
tel. (052) 371-91-00; fax 371-91-32  
jarek@alfaradio.com.pl; www.kenwood.info.pl

## NEXEDGE®

# KPG-150AP

## OTAP Manager

# Reconfigure Remotely

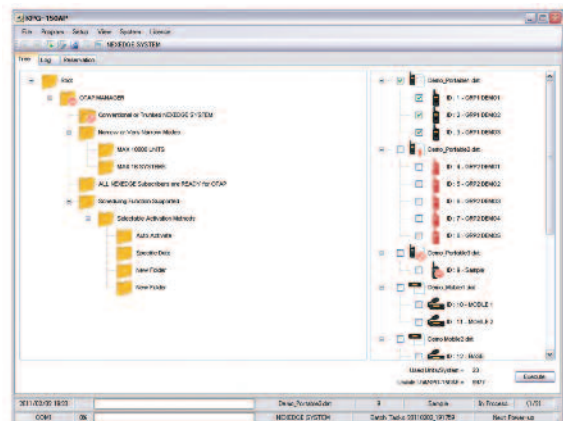
Kenwood's OTAP Manager empowers system operators to reconfigure NEXEDGE® subscriber units over-the-air with a fast and efficient Windows® application.

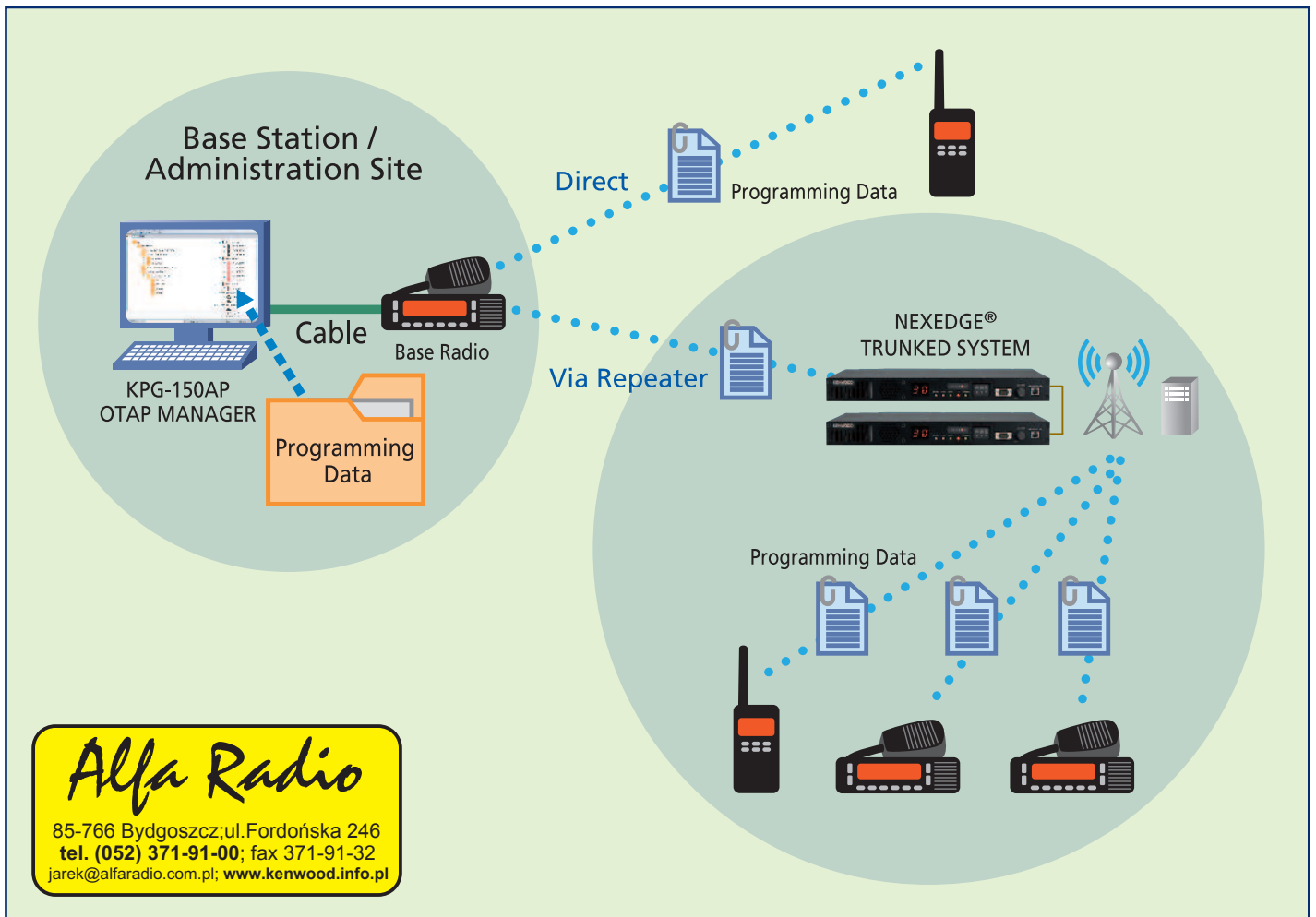
The KPG-150AP OTAP (Over the Air Programming) Manager dramatically simplifies the task of editing or adding features, ID Lists, Over-the-Air Alias Caller ID's, channels, sites, roaming parameters, etc. The operator is freed from the expense and lost productivity from collecting or running down fielded radios to write new data to each unit. The user-friendly Windows® interface is intuitive to operate and categorizes users by groups and radio system. The OTAP Manager compares the radios original data archives with any new changes to be sent over the air and then only sends those specific changes for fast and efficient utilization of air time and less down time.

### Main Features

- **Multi-system Capable**  
Manages multiple system types and the software supports multiple serial ports for different frequency band OTAP transmitters.
- **Efficient Data Transfer**  
The OTAP Manager compresses and sends only the changed data. Each radio takes on average 15 to 80 seconds depending on data file size.
- **Single Data File for Large Fleets**  
Identical fleet radios share the same data file and OTAP Manager delivers the programming to each individual Unit ID — no need to create a data file for each radio.
- **Un-manned Sessions**  
Multiple OTAP sessions can be scheduled to start immediately or at any pre-set times for off-peak hours. OTAP will run automatically and each session has programmable retries per radio in the event of interrupted contact.
- **Fail Safe OTAP Process**  
Forward error correction insures that all data sent is received 100% accurate. The radios retain both original and new data in separate memory until the OTAP process is complete.
- **OTAP Session Logging**  
OTAP session logs the PASS / FAIL status of each radio for review and re-scheduling of radios if needed.

KPG-150AP  
OTAP Manager interface





**Alfa Radio**

85-766 Bydgoszcz; ul. Fordońska 246  
 tel. (052) 371-91-00; fax 371-91-32  
 jarek@alfaradio.com.pl; www.kenwood.info.pl

## Other Highlights

- Full or partial radio program changes
- Manages 100,000 subscriber units
- 6.25 & 12.5 kHz NXDN®
- NEXEDGE® Trunked IP Networks
- NEXEDGE® Conventional IP Networks
- NEXEDGE® Direct Mode
- All NEXEDGE® subscriber models
- Windows® Graphical Interface
- Expanding Tree Fleet Management & Icons

## Main Specifications

	KPG-150AP
<b>Operating system</b>	Microsoft® Windows® XP SP3 or later / Windows Vista® / Windows® 7 (32/64-bit)
<b>CPU</b>	Intel® Pentium® III 3.1GHz or higher
<b>RAM</b>	256 MB or more
<b>HDD free space</b>	40 MB or more
<b>CD-ROM drive</b>	Required for software installation
<b>COM port</b>	One serial port (9600bps)
<b>Display</b>	XGA (1024 x 768) or higher resolution
<b>Others</b>	Microsoft® .NET Framework 2.0 or later

Kenwood follows a policy of continuous advancement in development. For this reason specifications may be changed without notice.

Microsoft®, Windows®, Windows Vista® are trademarks of Microsoft Corporation in the U.S. and other countries.

Intel® and Pentium® are trademarks of Intel Corporation in the U.S. and other countries.

NXDN® is a registered trademark of Kenwood Corporation and Icom Inc.

NEXEDGE® is a registered trademark of Kenwood Corporation.

**\ ltd.#k k k "\_Ybk ccX"jbZ'd'**

**IMPORTANT!** Please read Operating Precautions section in the Over-the-Air Programming Manager - Basic Operations manual created with the KPG-150AP installation.

## Listen to the Future

Kenwood has always connected with people through sound. Now we want to expand the world of sound in ways that only Kenwood can, listening to our customers and to the pulse of the coming age as we head toward a future of shared discovery, inspiration and enjoyment.

**Kenwood U.S.A. Corporation**  
 Communications Sector Headquarters  
 3970 Johns Creek Court, Suite 100, Suwanee, GA 30024-1265  
**Order Administration/Distribution**  
 P.O. BOX 22745, 2201 East Dominguez St., Long Beach, CA 90801-5745

**Kenwood Electronics Canada Inc.**  
 Canadian Headquarters and Distribution  
 6070 Kestrel Road, Mississauga, Ontario, Canada L5T 1S8

  
 www.kenwood.com



ADS#10911 Printed in USA